



TRANSPORTATION CABINET

Frankfort, Kentucky 40622
www.transportation.ky.gov/

Steven L. Beshear
Governor

Michael W. Hancock, P.E.
Secretary

December 3, 2012

CALL NO. 112
CONTRACT ID NO. 121377
ADDENDUM # 2

Subject: Daviess County, STP 0604 (014)
Letting December 14, 2012

(1) Revised - Plan Sheet - R2b

Proposal revisions are available at <http://transportation.ky.gov/Construction-Procurement/>.

Plan revisions are available at <http://www.lynnimaging.com/kytransportation/>.

If you have any questions, please contact us at 502-564-3500.

Sincerely,

A handwritten signature in blue ink that reads "Ryan Griffith".

Ryan Griffith
Director
Division of Construction Procurement

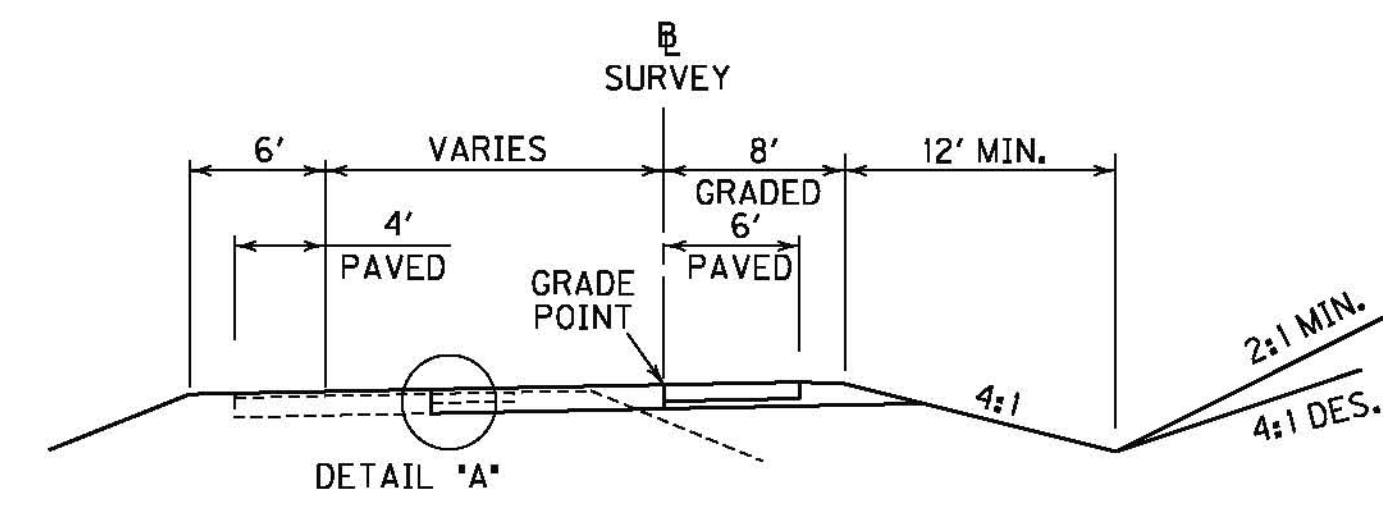
RG:ks
Enclosures



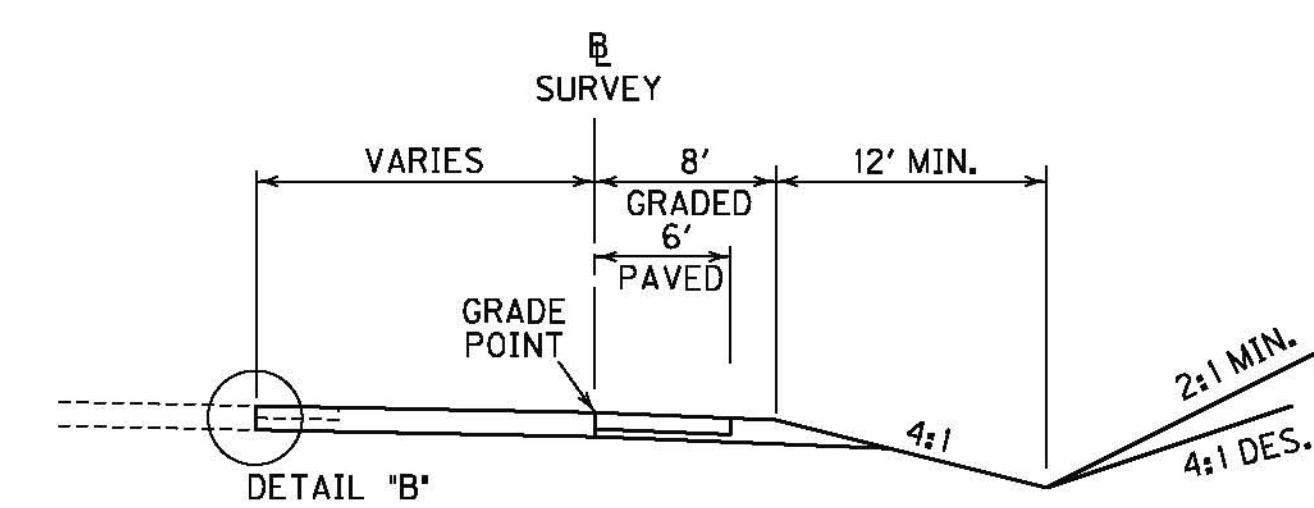
An Equal Opportunity Employer M/F/D

| | | |
|-----------|----------|-----------|
| COUNTY OF | ITEM NO. | SHEET NO. |
| DAVIESS | 2-287.2 | R2b |

TYPICAL SECTIONS



RAMP WIDENING
 RAMP A STA 109+65 - 113+30
 RAMP B STA 209+18 - 209+75



RAMP WIDENING
 RAMP B STA 215+40 - 237+05.58

- NOTES:
- (1) REMOVE EXISTING ASPHALT SHOULDER PAVEMENT, DGA, AND EDGE DRAIN TO RECEIVE NEW PAVEMENT.
 - (2) EXISTING LONGITUDINAL EDGE DRAINS THROUGH WIDENED AREAS AND ON OUTSIDE EDGE OF EXISTING PAVEMENT SHALL BE REMOVED AND NEW EDGE DRAINS CONSTRUCTED AS SHOWN IN THE DETAILS FOR THE PROJECT.

ALL LONGITUDINAL PIPE DRAINAGE SYSTEMS FOR THE PAVEMENT DRAINAGE BLANKET SHALL BE OUTLETTED TO A HEADWALL. OUTLETS SHALL BE IN FILL SECTION WHENEVER POSSIBLE. OUTLET SPACING FOR THE 4" PIPE ON THE OUTSIDE EDGE OF PAVEMENT SHALL NOT EXCEED 500 FEET EXCEPT GRADES 1% OR FLATTER. THEN THE SPACING SHALL NOT EXCEED 250 FEET. ALL SAGS SHALL HAVE AN OUTLET.
 - (3) THE INSPECTION AND CERTIFICATION OF THE EDGE DRAIN SYSTEM SHALL BE DONE AS DIRECTED BY THE ENGINEER, NOT AT THE COMPLETION OF THE EDGE DRAIN SYSTEM.
 - (4) FABRIC GEOTEXTILE TYPE IV AND CRUSHED AGGREGATE SIZE NO. 57 ARE INCIDENTAL TO PERFORATED PIPE-4" AS APPLICABLE. REMOVAL OF EXISTING EDGE DRAIN ON THE INSIDE AND OUTSIDE SHOULDER SHALL BE INCLUDED IN THE UNIT PRICE BID FOR NEW PERFORATED PIPE. WASTE THE EXISTING UNDERDRAIN PIPE. HEADWALLS SHALL BE REUSED IF POSSIBLE AND PAID FOR UNDER BID ITEM "REMOVE & RESET EXIST. PERF. PIPE HDWL".

SPECIAL NOTE FOR PAVEMENT SUBSURFACE DRAINAGE OUTLET

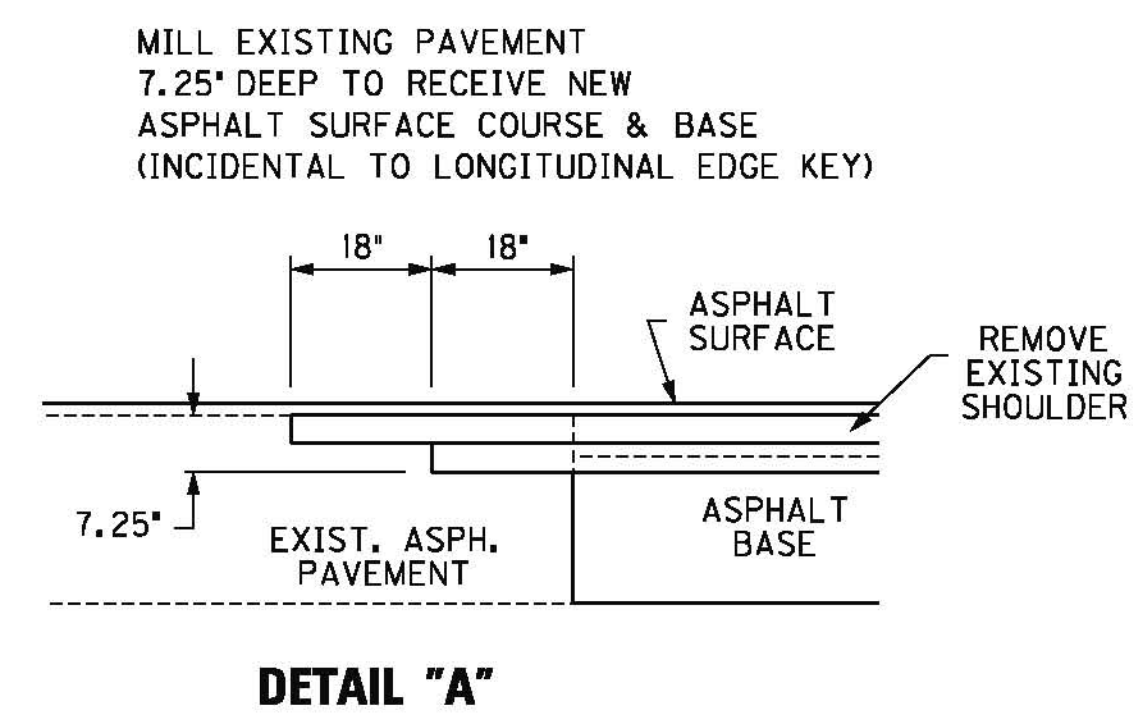
A QUANTITY OF CRUSHED AGGREGATE SIZE NO. 2 AS DEFINED IN THE CURRENT "KENTUCKY STANDARD SPECIFICATIONS FOR ROAD AND BRIDGE CONSTRUCTION" SHALL BE USED AT ALL PERFORATED PIPE HEADWALL OUTLETS AS ILLUSTRATED IN THE DETAIL AT RIGHT. CRUSHED AGGREGATE SIZE NO. 2 SHALL BE PLACED A MINIMUM DEPTH OF 4 INCHES AS DETAILED AT RIGHT.

DENSE GRADED AGGREGATE (DGA) REMOVED DURING PLACEMENT OF THE CRUSHED AGGREGATE SIZE NO. 2 SHALL BE USED TO DRESS THE EXISTING SHOULDERS WHERE DGA IS EXPOSED.

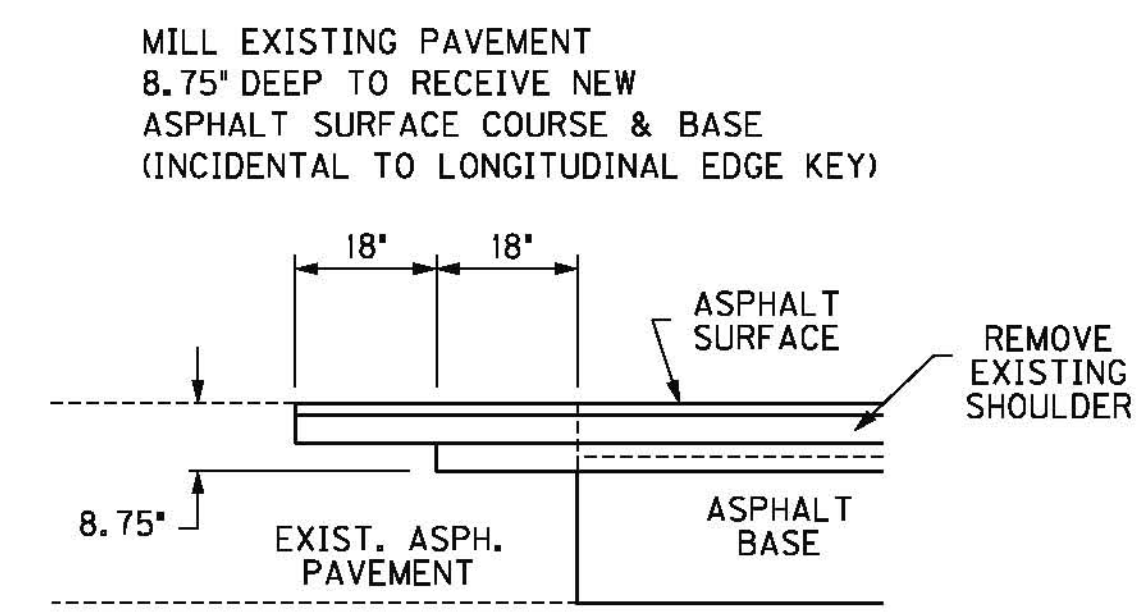
THE CONTRACT UNIT PRICE FOR "CRUSHED AGGREGATE SIZE NO. 2" SHALL BE FULL COMPENSATION FOR ALL MATERIALS, LABOR, AND OTHER INCIDENTALS NECESSARY TO PLACE CRUSHED AGGREGATE SIZE NO. 2 FOR CONTROL OF VEGETATION AND/OR EROSION CONTROL AT PAVEMENT EDGE DRAIN OUTLETS.

SEE CURRENT STANDARD DRAWING RDP-010 FOR DIMENSIONS AND OTHER DETAILS.

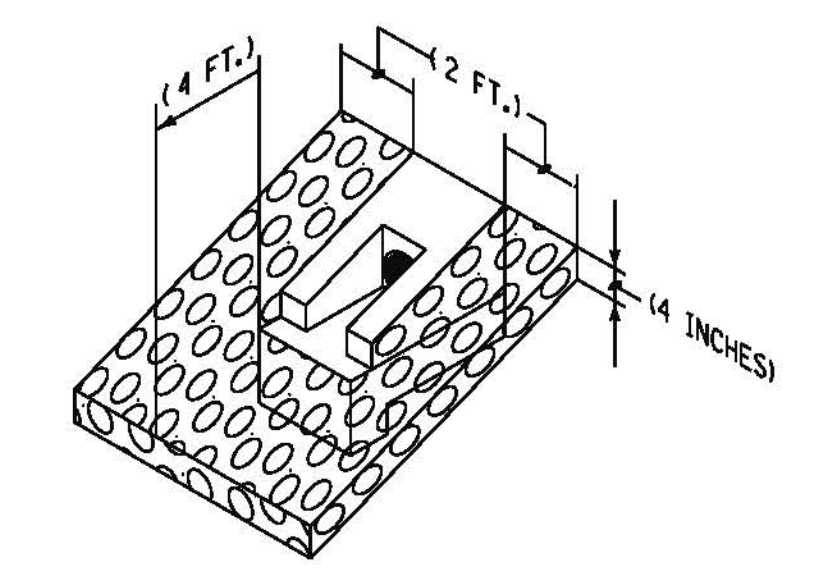
ESTIMATE ONE TON OF CRUSHED AGGREGATE SIZE NO. 2 FOR EACH PERFORATED PIPE HEADWALL OUTLET.



DETAIL "A"



DETAIL "B"



PAVEMENT SUBSURFACE DRAINAGE OUTLET

SCALE : N.T.S.

FILE NAME: G:\HD156.10\CAD\TYPICAL.DGN

USER: HMB
 DATE PLOTTED: August 10, 2012

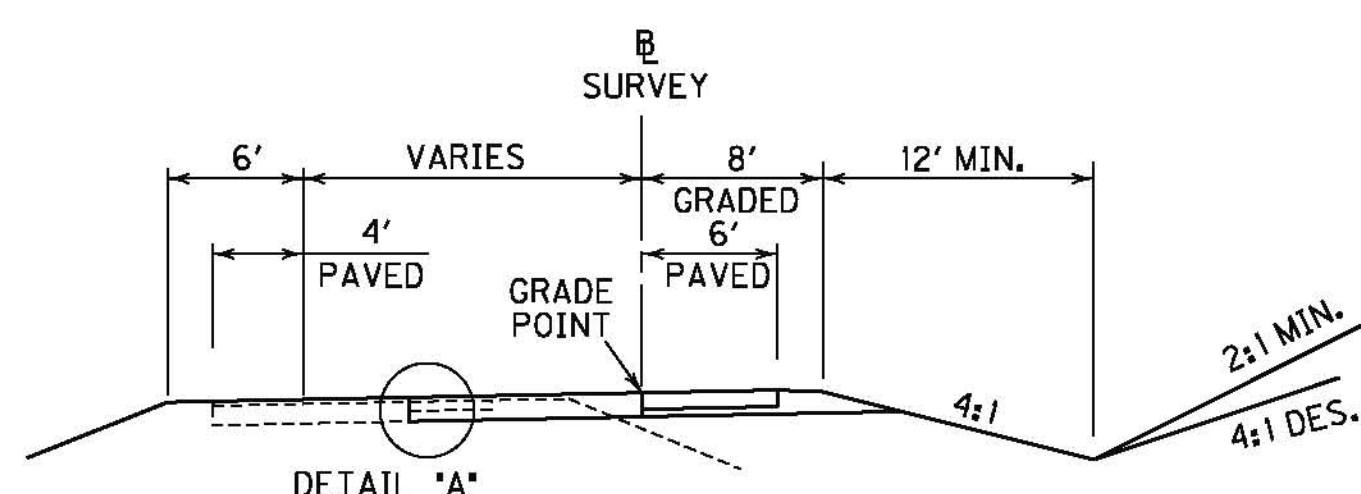
E-SHEET NAME:

MicroStation v8.11.7.180

| | | |
|-----------|----------|-----------|
| COUNTY OF | ITEM NO. | SHEET NO. |
| DAVIESS | 2-287.2 | R2b |

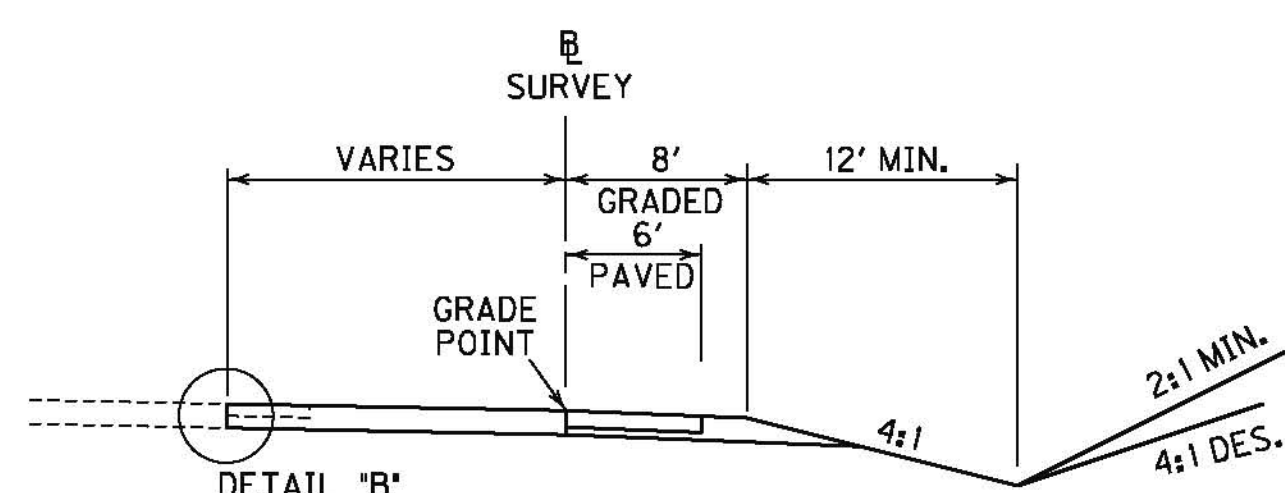
△ REVISED 11-30-12

TYPICAL SECTIONS



RAMP WIDENING

RAMP A STA 109+65 - 113+30
RAMP B STA 209+18 - 209+75



RAMP WIDENING

RAMP B STA 215+40 - 237+05.58

NOTES:

- (1) REMOVE EXISTING ASPHALT SHOULDER PAVEMENT, DGA, AND EDGE DRAIN TO RECEIVE NEW PAVEMENT.
 - (2) EXISTING LONGITUDINAL EDGE DRAINS THROUGH WIDENED AREAS AND ON OUTSIDE EDGE OF EXISTING PAVEMENT SHALL BE REMOVED AND NEW EDGE DRAINS CONSTRUCTED AS SHOWN IN THE DETAILS FOR THE PROJECT.
- ALL LONGITUDINAL PIPE DRAINAGE SYSTEMS FOR THE PAVEMENT DRAINAGE BLANKET SHALL BE OUTLETTED TO A HEADWALL. OUTLETS SHALL BE IN FILL SECTION WHENEVER POSSIBLE. OUTLET SPACING FOR THE 4" PIPE ON THE OUTSIDE EDGE OF PAVEMENT SHALL NOT EXCEED 500 FEET EXCEPT GRADES 1% OR FLATTER. THEN THE SPACING SHALL NOT EXCEED 250 FEET. ALL SAGS SHALL HAVE AN OUTLET.
- (3) THE INSPECTION AND CERTIFICATION OF THE EDGE DRAIN SYSTEM SHALL BE DONE AS DIRECTED BY THE ENGINEER, NOT AT THE COMPLETION OF THE EDGE DRAIN SYSTEM.
 - (4) FABRIC GEOTEXTILE TYPE IV AND CRUSHED AGGREGATE SIZE NO. 57 ARE INCIDENTAL TO PERFORATED PIPE-4" AS APPLICABLE. REMOVAL OF EXISTING EDGE DRAIN ON THE INSIDE AND OUTSIDE SHOULDER SHALL BE INCLUDED IN THE UNIT PRICE BID FOR NEW PERFORATED PIPE. WASTE THE EXISTING UNDERDRAIN PIPE. HEADWALLS SHALL BE REUSED IF POSSIBLE AND PAID FOR UNDER BID ITEM "REMOVE & RESET EXIST. PERF. PIPE HDWL".

SPECIAL NOTE FOR PAVEMENT SUBSURFACE DRAINAGE OUTLET

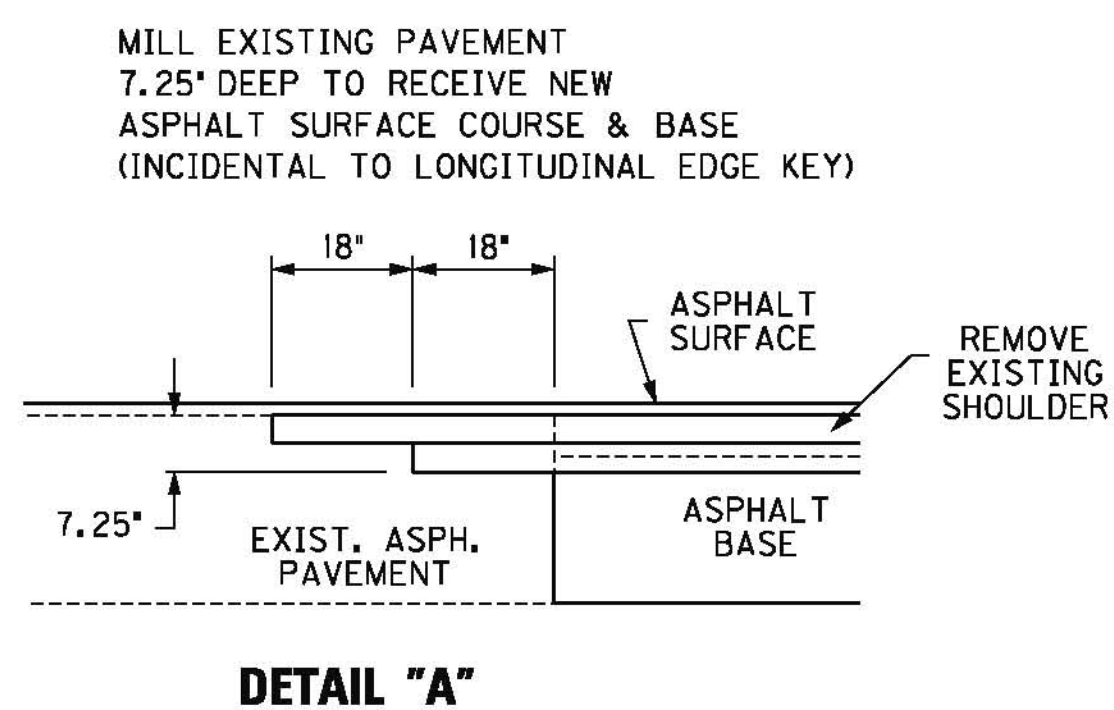
A QUANTITY OF CRUSHED AGGREGATE SIZE NO. 2 AS DEFINED IN THE CURRENT "KENTUCKY STANDARD SPECIFICATIONS FOR ROAD AND BRIDGE CONSTRUCTION" SHALL BE USED AT ALL PERFORATED PIPE HEADWALL OUTLETS AS ILLUSTRATED IN THE DETAIL AT RIGHT. CRUSHED AGGREGATE SIZE NO. 2 SHALL BE PLACED A MINIMUM DEPTH OF 4 INCHES AS DETAILED AT RIGHT.

DENSE GRADED AGGREGATE (DGA) REMOVED DURING PLACEMENT OF THE CRUSHED AGGREGATE SIZE NO. 2 SHALL BE USED TO DRESS THE EXISTING SHOULDERS WHERE DGA IS EXPOSED.

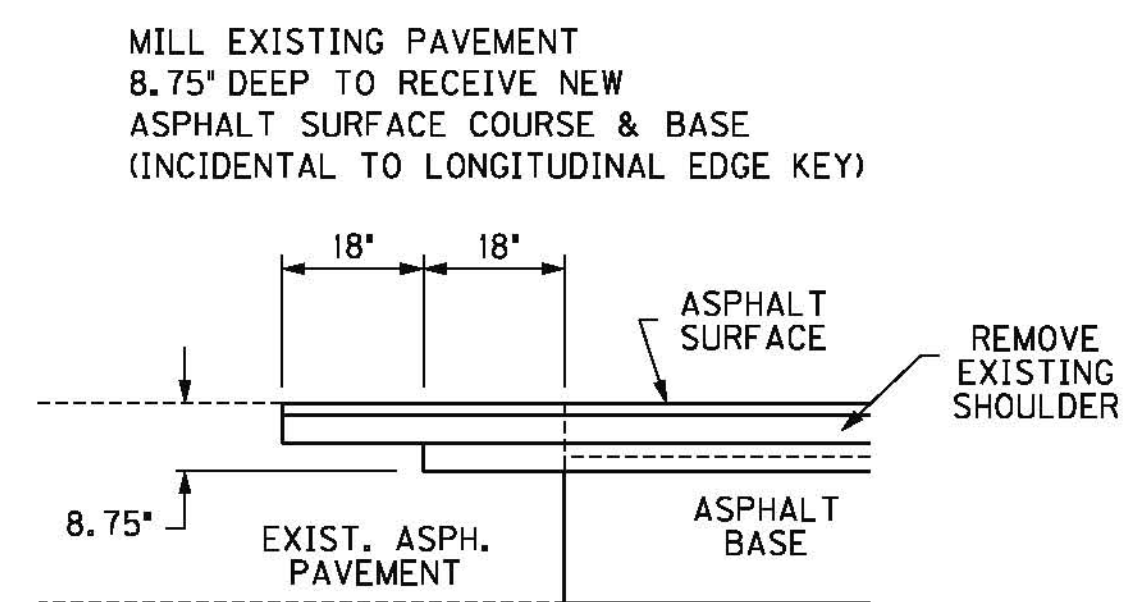
THE CONTRACT UNIT PRICE FOR "CRUSHED AGGREGATE SIZE NO. 2" SHALL BE FULL COMPENSATION FOR ALL MATERIALS, LABOR, AND OTHER INCIDENTALS NECESSARY TO PLACE CRUSHED AGGREGATE SIZE NO. 2 FOR CONTROL OF VEGETATION AND/OR EROSION CONTROL AT PAVEMENT EDGE DRAIN OUTLETS.

SEE CURRENT STANDARD DRAWING RDP-010 FOR DIMENSIONS AND OTHER DETAILS.

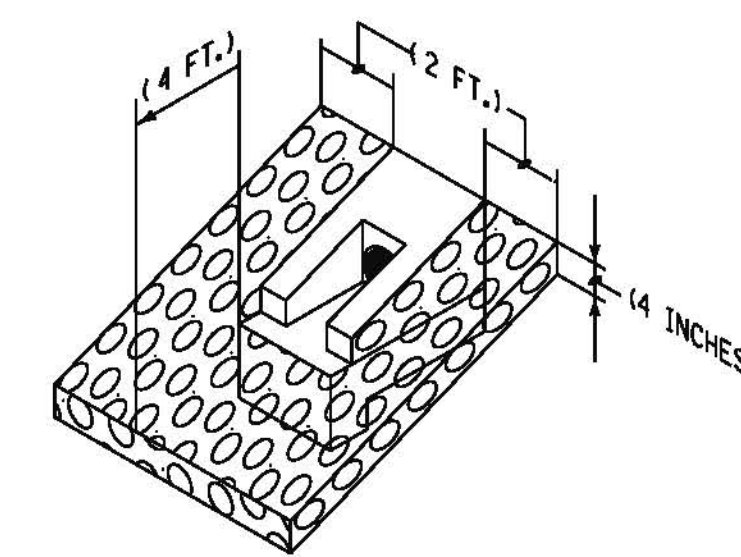
ESTIMATE ONE TON OF CRUSHED AGGREGATE SIZE NO. 2 FOR EACH PERFORATED PIPE HEADWALL OUTLET.



DETAIL "A"



DETAIL "B"



PAVEMENT SUBSURFACE DRAINAGE OUTLET

SCALE : N.T.S.

FILE NAME: G:\HD156.10\CAD\TYPICAL.DGN

USER: HMB
DATE PLOTTED: August 10, 2012

E-SHEET NAME:

MicroStation v8.11.7.180